

# MB

## Wireless Firing System

For Pyrotechnics, Fireworks Show



# So many advanced Functions So great Advantage So much Benefit

Flexible

Accuracy 1ms

Limitless Cues

Music Control

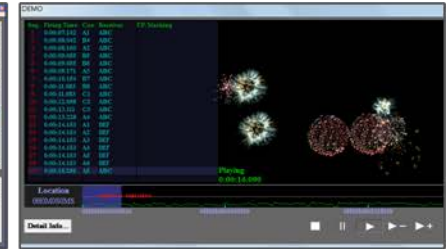
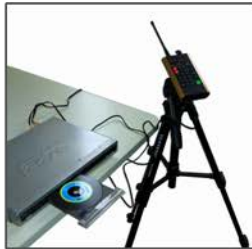
Visible DEMO

Multifunctional

Remote Upgrade

FSK Modulation

Easy to Use



# Flexible & Accurate—

Can fire any of fireworks at any Firing Time Point, absolute flexible to achieve your purpose.

Accuracy 1 millisecond for assigning Firing Time Points to cues to make you have an ideal show.

0:00:15.256 A5 ABC

Firing Point Time: 0 hour 00  
minute 15 second 256  
millisecond  
Firing Cue: A5  
Receiver: ABC

Seq.	Firing Time	Cue	Receiver
1	0:00:07.142	A1	ABC
2	0:00:08.042	B4	ABC
3	0:00:08.160	A2	ABC
4	0:00:09.055	B5	ABC
5	0:00:09.055	B6	ABC
6	0:00:09.171	A3	ABC
7	0:00:10.154	B7	ABC
8	0:00:11.083	B8	ABC
9	0:00:11.083	C1	ABC
10	0:00:12.098	C2	ABC
11	0:00:13.111	C3	ABC
12	0:00:13.228	A4	ABC
13	0:00:14.153	A1	DEF
14	0:00:14.153	A2	DEF
15	0:00:14.153	A3	DEF
16	0:00:14.153	A4	DEF
17	0:00:14.153	A5	DEF
18	0:00:14.153	A6	DEF
19	0:00:15.256	A5	ABC

A1 00:00:02.000  
A2 ---:---:---  
A3 00:00:02.990  
A4 00:00:03.950



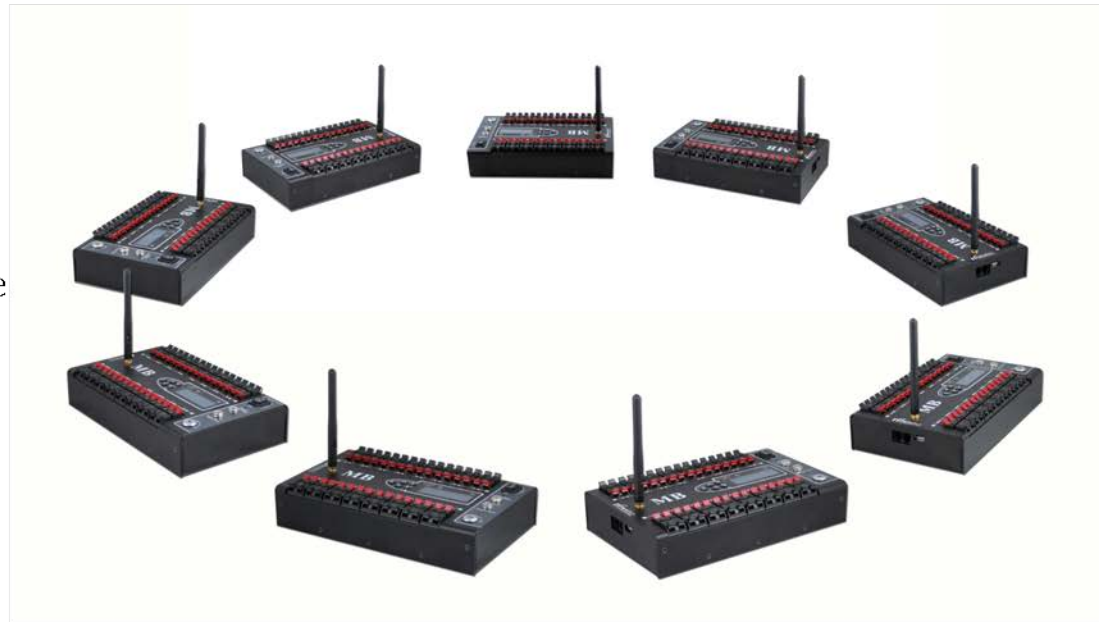
You can assign Firing Time Points in PC through input of keyboard, or through mouse's clicks, or according to the playing of music, can achieve different kinds of purpose.

Setting Firing Time Points in LCD of receiver is available as well, it is useful for a small show, convenient and simple.

# Limitless Cues—

**Limitless firing cues at GROUP SYSTEM, you can make corresponding shows according to different scenes.**

PC interface can make multiple receivers work out a **GROUP SYSTEM** for a big show, these receivers are discrete and can be synchronized to the same transmitter. The quantity of receiver is limitless, you can work out fire cues as much as you need.



# Music Control—

**Your MP3 player can do it! The perfect match of music and fireworks show is just for you!**



Use RFRemotech Melody Combination Software, you can make multiple melodies combined according to scene, and the combined melody can control the transmitter when it is played through a player.

No special requirement for the player, any standard type including MP3 player will work.

# Visible DEMO—

Visible DEMO in either a PC or local LEDs, everything is in your hands!

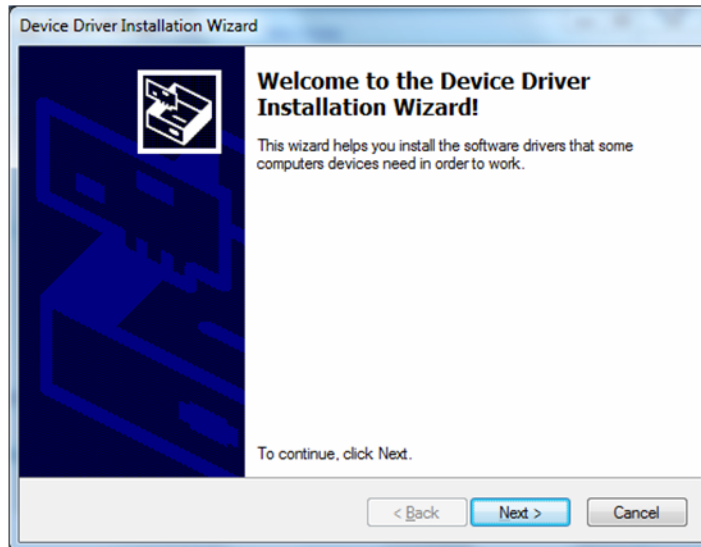
The screenshot displays a software interface for a fireworks demo. The main window is titled "DEMO" and contains the following elements:

- Table:** A table with columns for Seq., Firing Time, Cue, Receiver, and F.P. Marking. It lists 19 firing sequences.
- Preview:** A video preview window showing fireworks exploding in the night sky. The text "Playing 0:00:16.090" is overlaid on the bottom right of the preview.
- Location Timeline:** A horizontal timeline labeled "Location" with the value "0H00M0S0MS". It shows a red bar representing a location and a green waveform below it. Time markers are at 0H00M00S000MS, 0H00M00S059MS, and 0H00M00S119MS.
- Detail Info...:** A button labeled "Detail Info..." is located at the bottom left.
- Playback Controls:** Standard media control buttons (stop, play/pause, next, previous) are located at the bottom right.

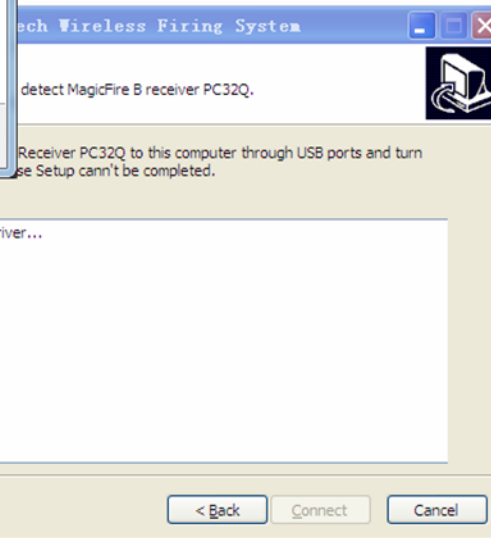
There is a DEMO interface in PC, you can check if firing assignment is correct. Especially it is quite useful when you do fireworks show with Music Control.

# Remote Upgrade—

**Firmware and software can be remotely upgraded through internet, and it is free! You are having a newest system all the time. It's totally worth it.**



Connect receivers to your PC to have firmware and software upgraded simply when you have downloaded them in your PC .





# Multifunctional & FSK—

**Individual Firing,  
Firing-in-sequence,  
Stepper / Pause / Stop Firing etc.,  
can work out almost all the traditional firings.**

**FSK modulation, more reliable and more steady remote control.**

Can work out 200m range under FCC and CE rules.

Besides of Multifunctional transmitter TCF200-U, there are other options of transmitter like TCF200-12LN & TCF200-6XT, they are inexpensive and can work out traditional functions.





# Others—

**Easy to Use:**

**Friendly and easy PC interface, you will soon master the skills after study of yourself.**

**Overload Protection,**

**Reverse Protection,**

**Dual Powers,**

**Grace and Compact Profile, etc..**

**A excellent design is just for you.**

**Even extendable to be a SLAVE unit to let you have another excellent application in the future. Absolute unexpected satisfaction!**

# Thanks for View!



**Remote Control Products, Remote Controllable Service**

Email: [service@RFRemotech.com](mailto:service@RFRemotech.com)

[Http://www.RFRemotech.com](http://www.RFRemotech.com)